

## Atlas Star 1 kb DNA Ladder EXPRESS

Cat. No.	Pack Size	Conc.
BT10701	500 µl	0.1 µg/µl
BTS0016	25 µl SAMPLE	0.1 µg/µl

### Storage & Shipping:

Storage +4°C, for longer periods at -20° C, shipping at room temperature.

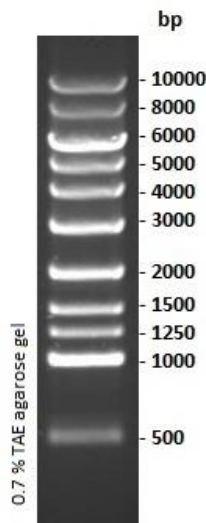
### Composition:

Consists 11 bands of following sizes: 500 bp, 1000 bp, 1250 bp, 1500 bp, 2000 bp, 3000 bp, 4000 bp, 5000 bp, 6000 bp, 8000 bp and 10000 bp.

### Description:

Atlas Star 1 kb DNA Ladder is a ready-to-use molecular weight marker suitable for DNA fragment size determination on gel electrophoresis. The ladder is formulated to run accurately and to provide crisp band patterns.

It contains two dyes: bromophenol blue and xylene cyanol which serve as visual aid to monitor the progress of migration during agarose gel electrophoresis.



**Figure.** Atlas Star 1 Kb DNA Ladder EXPRESS showing DNA fragments from 500 to 10000 bp.

### Safety warnings and precautions:

This product is designed for research purposes and *in vitro* use only.

According to common laboratory safety practice, it is recommended to wear protective clothing, gloves and safety glasses. Please refer to [www.bioatlas.com](http://www.bioatlas.com) for Material Safety Data Sheet of the product.

*Some applications this product is used in may require a license which is not provided by the purchase of this product. Users should obtain the license if required.*